

DEPARTMENT OF PARKS AND RECREATION



REPORT TO THE LEGISLATURE

**USE OF MOTOR VEHICLE FUEL ACCOUNT (BOATING) AND
THE HARBORS AND WATERCRAFT REVOLVING FUND**

**For
Fiscal Year
2005/06**



© 2003, California State Parks, Folsom Lake SRA

January 2007

REPORT TO THE LEGISLATURE

USE OF MOTOR VEHICLE FUEL ACCOUNT (BOATING) AND THE HARBORS AND WATERCRAFT REVOLVING FUND

CONTENTS

SUMMARY

- APPENDIX A Allocation of Funds from Harbors and Watercraft Revolving Fund
- APPENDIX B Operating Costs of Districts with Boating Facilities
- APPENDIX C Park Units with Boating-Related Activities
- APPENDIX D Summary of Boating Recreation Services
- APPENDIX E Boating Facilities and Services by Individual Park Unit

**REPORT TO THE LEGISLATURE
USE OF MOTOR VEHICLE FUEL ACCOUNT (BOATING) AND
THE HARBORS AND WATERCRAFT REVOLVING FUND**

2005/06 FISCAL YEAR

SUMMARY

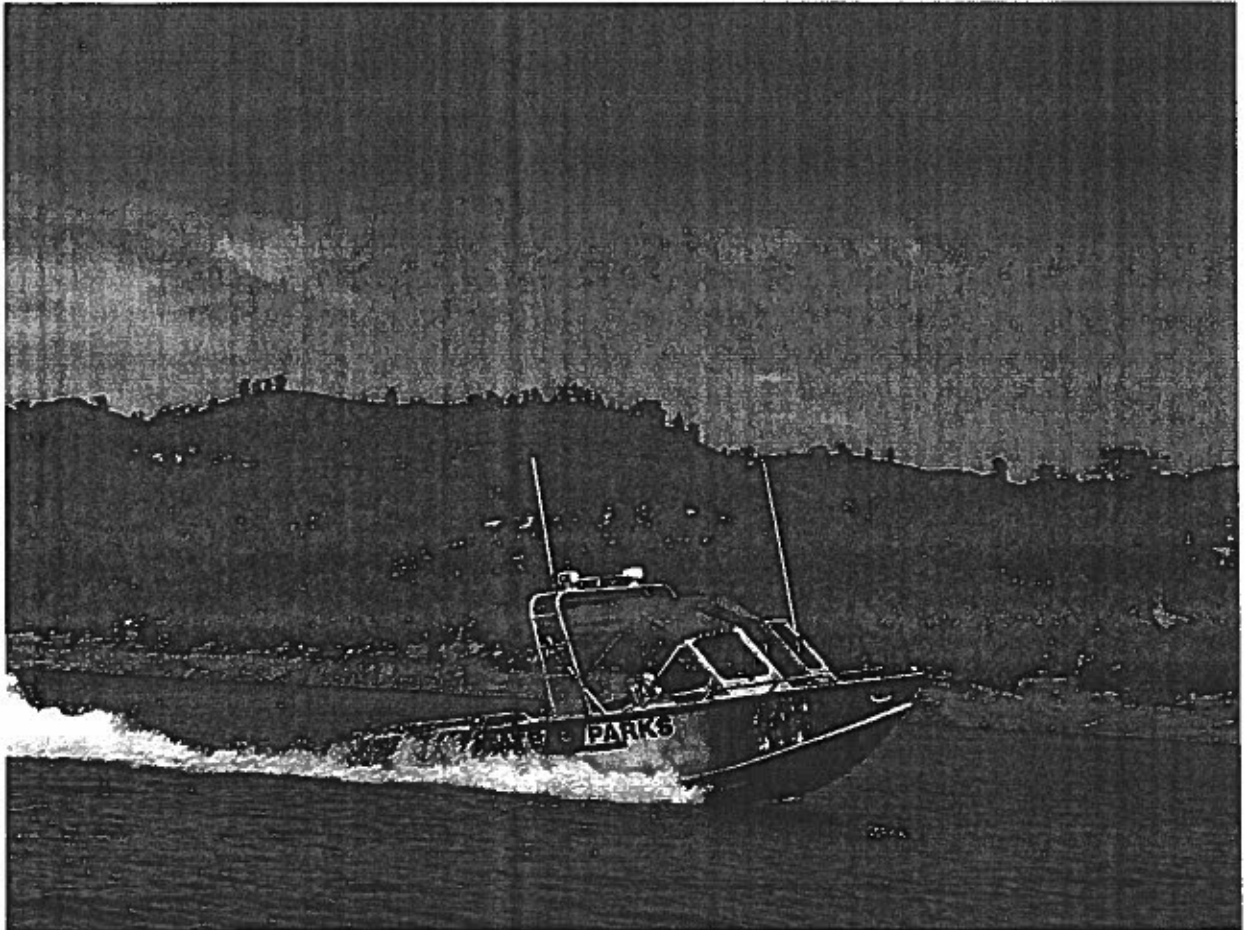
The California Department of Parks and Recreation is required to report annually to the Legislature on expenditure of funds from the Harbors and Watercraft Revolving Fund and the Motor Vehicle Fuel Account. The reporting requirement is contained in the Harbors and Navigation Code Section 85.2(b).

"The Department of Parks and Recreation shall submit to the Legislature, on or before January 1 of each year, a report describing the allocation and expenditure of funds made available to the Department of Parks and Recreation from the Harbors and Watercraft Revolving Fund and from the Motor Vehicle Fuel Account in the Transportation Tax Fund attributable to taxes imposed on the distribution of motor vehicle fuel used or usable in propelling vessels during the previous fiscal year..."

The Department of Parks and Recreation operates 18 Districts (not including the specially funded Off-Highway Vehicle Recreation Districts) containing 271 park units throughout the State of California. These park units provide a variety of recreational opportunities, natural and cultural resource experiences, education and interpretative activities. Many of the park units have water as the main attraction where boating and boating related activities take place. These park units include lakes, reservoirs, waterways and coastline. Some of the Department's most heavily visited and heavily staffed units are those offering boating activities. In fiscal year 2005/06 the Department recorded over 77 million visitors to the Park System.

Fully a third of all State Park System units provide boating related facilities and services. The Department is responsible for the largest number of recreational boating facilities and opportunities in California. It manages the largest staff of law enforcement and other personnel responsible for the health and safety of boaters and other individuals in and near the waters of California. The types of boating facilities offered by units within the State Park System include docks, launch ramps, parking areas, mooring facilities, water ski areas, boat-in camps, floating restrooms, buoys to mark various water hazards and set speed limits, rental facilities, and supplies. In addition, the Department provides aquatic safety programs, boat patrol, law enforcement, search and rescue activities and aquatic hazard mitigation.

In the 2005/06 fiscal year, the Department received \$26.649 million from the *Motor Vehicle Fuel Tax Account* into the State Parks Recreation Fund. The department also received \$689,000 from the *Harbors and Watercraft Revolving Fund* to support watercraft recreation. These funds were in turn allocated to 17 State Park Districts that in some way support boating and boating related recreation.



© 2003, California State Parks, Folsom Lake SRA

Appendix A contains a breakdown of the allocation of funds from the Harbors and Watercraft Revolving Fund. Appendix B contains operating costs associated with the Harbors and Watercraft Funds, as well as the Motor Vehicle Tax Account. Appendix C lists 89 park units that provide, or are impacted, by boating recreation. Appendix D is a summary of boating recreation services provided by the Department of Parks and Recreation. Appendix E contains a narrative description for each of the nearly 90 State Park System units providing boating related services and facilities.

APPENDIX A

**ALLOCATION OF FUNDS FROM
THE HARBORS AND WATERCRAFT REVOLVING FUND**

FY 2005/06

Central Valley District	\$95,576
Channel Coast District	\$8,039
Colorado Desert District	\$11,932
Diablo Vista District	\$7,298
Gold Fields District	\$76,373
Inland Empire District	\$114,409
North Bay District	\$19,639
Northern Buttes District	\$244,512
Statewide Account	\$111,222
TOTAL	\$689,000

APPENDIX B

OPERATIONAL COSTS OF DISTRICTS WITH BOATING FACILITIES¹

FY 2005/06

Northern Division	Diablo Vista District	\$84,375
	Mendocino District	\$50,625
	Monterey District	\$33,750
	North Bay District	\$1,634,339
	North Coast Redwoods	\$112,500
	Northern Buttes District	\$3,644,816
	San Luis Obispo Coast District	\$89,100
	Santa Cruz District	\$185,625
	Sierra District	\$450,000
Southern Division	Angeles District	\$56,250
	Central Valley	\$8,868,731
	Channel Coast District	\$94,500
	Colorado Desert District	\$1,429,950
	Gold Fields District	\$5,548,896
	Inland Empire District	\$7,751,362
	Orange Coast District	\$281,250
	San Diego District	\$281,250
	Total	\$30,597,319

¹ These costs do not include sectors that have non-boating related facilities.

APPENDIX C

PARK UNITS WITH BOATING RELATED ACTIVITIES

FY 2005/06

**NORTHERN DIVISION
DISTRICT/UNIT**

Diablo Vista

Candlestick Point SRA

Mendocino

Greenwood SB
Hendy Woods SP
MacKerricher SP
Mendocino Headlands SP
Navarro River Redwoods SP
Russian Gulch SP
Van Damme SP

Monterey

Asilomar SB
Carmel River SB
Garrapata SP
Marina SB
Monterey SB
Moss Landing SB
Point Lobos SR
Salinas River SB
Zmudowski SB

North Bay

Angel Island SP
China Camp SP
Fort Ross SHP
Salt Point SP
Sonoma Coast SB
Tomales Bay SP

North Coast Redwoods

Benbow Lake SRA
Humboldt Lagoons SP
Humboldt Redwoods SP
Jedediah Smith Redwoods SP
Richardson Grove SP
Standish-Hickey SRA
Tolowa Dunes SP

Northern Buttes

Ahjumawi Lava Springs SP
Bidwell-Sacramento River SP
Clear Lake SP
Colusa-Sacramento River SRA
Lake Oroville SRA
McArthur-Burney Falls Memorial SP
Woodson Bridge SRA

San Luis Obispo Coast

Limekiln SP
Morro Bay SP
San Simeon SP
William Randolph Hearst Memorial SB

Santa Cruz

Manresa SB
Natural Bridges SB
Seacliff SB
Sunset SB
Twin Lakes SB

Sierra

D. L. Bliss SP
Donner Memorial SP
Ed Z'berg - Sugar Pine Point SP
Emerald Bay SP
Kings Beach SRA
Mono Lake Tufa SR
South Yuba River SP
Tahoe SRA

APPENDIX C
(Continued)

PARK UNITS WITH BOATING RELATED ACTIVITIES

FY 2005/06

SOUTHERN DIVISION
DISTRICTS/ UNITS

Angeles

Leo Carrillo SP
Point Mugu SP

Central Valley

Bethany Reservoir SRA
Caswell Memorial SP
McConnell SRA
Millerton Lake SRA
San Luis Reservoir SRA
Turlock Lake SRA

Channel Coast

Carpinteria SB
Emma Wood SB
Gaviota SP
McGrath SB
Refugio SB
San Buenaventura SB

Colorado Desert

Picacho SRA
Salton Sea SRA

Gold Fields

Auburn SRA
Brannan Island SRA
Delta Meadows
Folsom Lake SRA
Marshall Gold Discovery SHP

Inland Empire

Lake Perris SRA
Silverwood Lake SRA

Orange Coast

Bolsa Chica SB
Crystal Cove SP
Doheny SB
Huntington SB
San Clemente SB
San Onofre SB

San Diego Coast

Cardiff SB
Carlsbad SB
San Elijo SB
Silver Strand SB
South Carlsbad SB
Torrey Pines

APPENDIX D

SUMMARY OF BOATING RECREATION SERVICES

FY 2005/06

Boating Safety & Law Enforcement

Patrol/Rescue Boats: Operation (patrol), repair and maintenance costs.

Search and Rescue: The cost of personnel and equipment for emergency services provided from shore-based resources or vessel based resources.

Buoys: Installation and maintenance of all buoys, including swim beach and mooring buoys.

Wind Warning Lights: Installation and maintenance.

Channel Maintenance: Dredging, weed control, debris removal, etc.

Boater Safety Education/Interpretation: Time, materials; signs and panels.

Law Enforcement: Visitor Services: Patrol, boating safety, arrests, citations court time, initial public contacts relating to law enforcement issues.

Operation & Maintenance of Land Based Facilities

Ramps/Boat Launch: Installation, materials and upkeep.

Docks - Courtesy: Installation, materials and upkeep.

Piers: Installation, materials and upkeep.

Slips: Installation, materials and upkeep.

Moorings: Installation, materials and upkeep.

Parking: Installation, materials and upkeep. (Including lighting and landscaping)

Restrooms: Cleaning Supplies, fixture replacement costs, building repairs.

Chemical Toilets: *Rentals*; Include rental agreement costs for installation and maintenance; supplies; upkeep. *Park-owned*: materials, supplies, maintenance and repairs.

Boat-In Camps: Maintenance, repairs, upkeep, vegetation management.

Pump-Out Facilities/Marine: Materials and upkeep.

Picnic Sites- For Boating: Clean-up, firepits, BBQ's, table repair/replacement, upkeep (include lighting and landscaping).

Refuge Collection-Boating Related: Cost of receptacles, contrast expense, materials and general upkeep.

Operation & Maintenance of Water Based Facilities

Work Boat/Barge: Purchase, replacement, maintenance, repair costs, staff time.

Floating Campsites: Installation, materials and upkeep.

Floating Restrooms: Installation, materials and upkeep.

APPENDIX E

BOATING FACILITIES AND SERVICES BY INDIVIDUAL PARK UNIT

FY 2005/06

Northern Division

Diablo Vista District

Candlestick Point SRA

Provides a primitive boat launch suitable for launching small car top boats, and wind surfers. Support facilities include picnic tables, restrooms, fire pits, and buoys.

Mendocino District

Greenwood SB

Provides a primitive boat launch to the ocean. Support facilities include a picnic and parking area. In addition a search and rescue team serves the park and ocean area.

Hendy Woods SP

Provides a primitive boat launch suitable for canoe, kayak, and float tubes. Support facilities include approximately 10 parking spaces, picnic areas, restrooms, camping facilities (including hot showers), and other recreational opportunities. In addition a search and rescue team serves the park and river area.

MacKerricher SP

Provides a primitive boat launch to the ocean and river. Support facilities include a 35 site parking lot, accessible restroom, picnic area, camping, shower facilities and a host of other recreational activities. In addition a search and rescue team serves the park and ocean/river area.

Mendocino Headlands SP

Provides a primitive boat launch to the ocean and river. The local fire departments and search and rescue teams often launch from this area to perform rescues in the surrounding areas. Support facilities include a large parking lot and access to other recreational opportunities. In addition a search and rescue team serves the park and ocean/river area.

Navarro River Redwoods SP

Provides a primitive boat launch suitable for canoe, kayak and float-tubes. Support facilities include 2 parking areas, which can accommodate up to 25 vehicles (combined), restrooms and picnic areas. In addition a search and rescue team serves the park and river area.